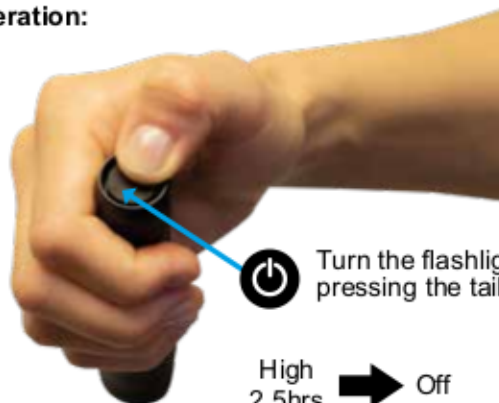




Supplied with Type C USB charging cable.

## Operation:



Turn the flashlight on/off by pressing the tail cap switch

High 2.5hrs → Off



### Press the body switch:

Medium 4.6hrs → Low 8.2hrs → Eco 63hrs → High 2.5hrs

### Press and hold the body switch for 2 seconds in any mode:

Strobe 5.4hrs → SOS 9.5hrs



### The body switch will show the battery status:

- Blue = More 30% battery
- Red = Less than 30% battery
- Red Flashing = Less than 20% battery

## Charging:

Rotate the protective USB socket, to reveal the charging socket.



Charging Socket



### Battery charging indicator:

- Red light while charging
- Blue light when charged

Recharge is approximately 6 hours.

## Optional Accessories:



### For use in vehicles:

Optional 12/24V Vehicle Charger  
Product code: CHIC3\_7-LI-ION



### EU or UK Adaptor:

Product code: CH-USB-EU/UK

If at any time, you need to dispose of this product or parts of this product: please note that waste electrical products, bulbs and batteries should not be disposed of with ordinary household waste. Recycle where facilities exist. Check with your local authority for recycling advice. Alternatively, NightSearcher is happy to take receipt of this product at end-of-life and will recycle it on your behalf.



Product weight (g)	211g
Product size (mm)	165x36x28.5mm
NS Part No.	NSEXPLORER1200